

# filtered light II

*for flute & harp*

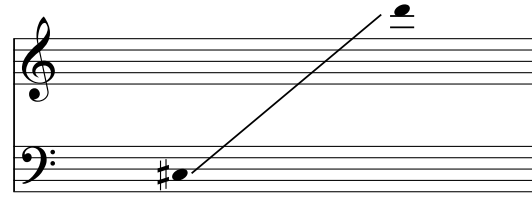
gavin osborn

2015

*to ellie jackson & becki mcilroy*




**NOTES:**

**HARP:** The initial tuning for the harp is as follows: D E $\flat$  F G $\flat$  A B $\flat$  C $\sharp$  becoming D E $\sharp$  F $\flat$  G $\sharp$  A B $\sharp$  C $\sharp$  by the end of the piece. Within the following range:



F should be tuned to F $\sharp$ , & A to A $\sharp$ , to give a tuning of D E $\flat$  F $\sharp$  G $\flat$  A $\sharp$  B $\flat$  C $\sharp$  becoming D E $\sharp$  F $\flat$  G $\sharp$  A $\sharp$  B $\sharp$  C $\sharp$  by the end of the piece.

**FLUTE:** It is assumed that the player is conversant with standard microtonal fingerings. The single multiphonic is played from the D3 fingering.

-  timbral trill
-  timbral, fingers rippling in the given direction
-  glissandi

all other elements are indicated in the score.

filtered light II

gavin osborn

Open

Flute

air/pitch (c. 50/50)

sim. c.5-6"

Harp

D# Eb F# Gb A# Bb #

(thunder) f (l.v.)

(sim.) f (l.v.)

f (l.v.)

8<sup>vb</sup>

Fl.

c.4-5"

c.4-5"

mp molto espress.

mp molto espress.

mp molto espress.

(rhythm & order of repetition ad lib.)

p sempre l.v.

p mp sempre l.v.

B#

\*in this section the harp should attempt to synchronise with the flute as suggested visually by the notation. however, this is not binding - deviations are welcome & should be a source of enjoyment rather than anxiety.

Fl.

mf ma dolce

mf

mp

mp

mf

p (sotto voce)

mf espress.

p (sotto voce)

mp

(p mp)

(p mp)

Fl. *mf espress.*

Harp: *mf*

E# *mp* G#

Open

senza vib.

*p* *p* *mp* *p* *mp* *f* *mp* *f* *mp*

*in any order*

*p*

*p*

gradually shift from harmonics to nat. pitches, increase density & widen tessitura to create an intensification & accelerando

*mf*

**pushing forwards**

\*all harmonics from the 8ve

Fl. *p* *sfz*

Harp: *mf* *ff*

*mf* *sfz* *mp* *sfz* *mf* *f* *mp* *sfz* *sfz*

*ff* *p* *ff* *sfz*

Slow, even ♩=c.72 (harp only)

(l.v.) *pp*

**Medium-paced, slow flowing ♩=c.60 (flute only)**

Fl. *p* *p* *p* *p* *pp* *pp*

Harp: *pp* *pp*

to air